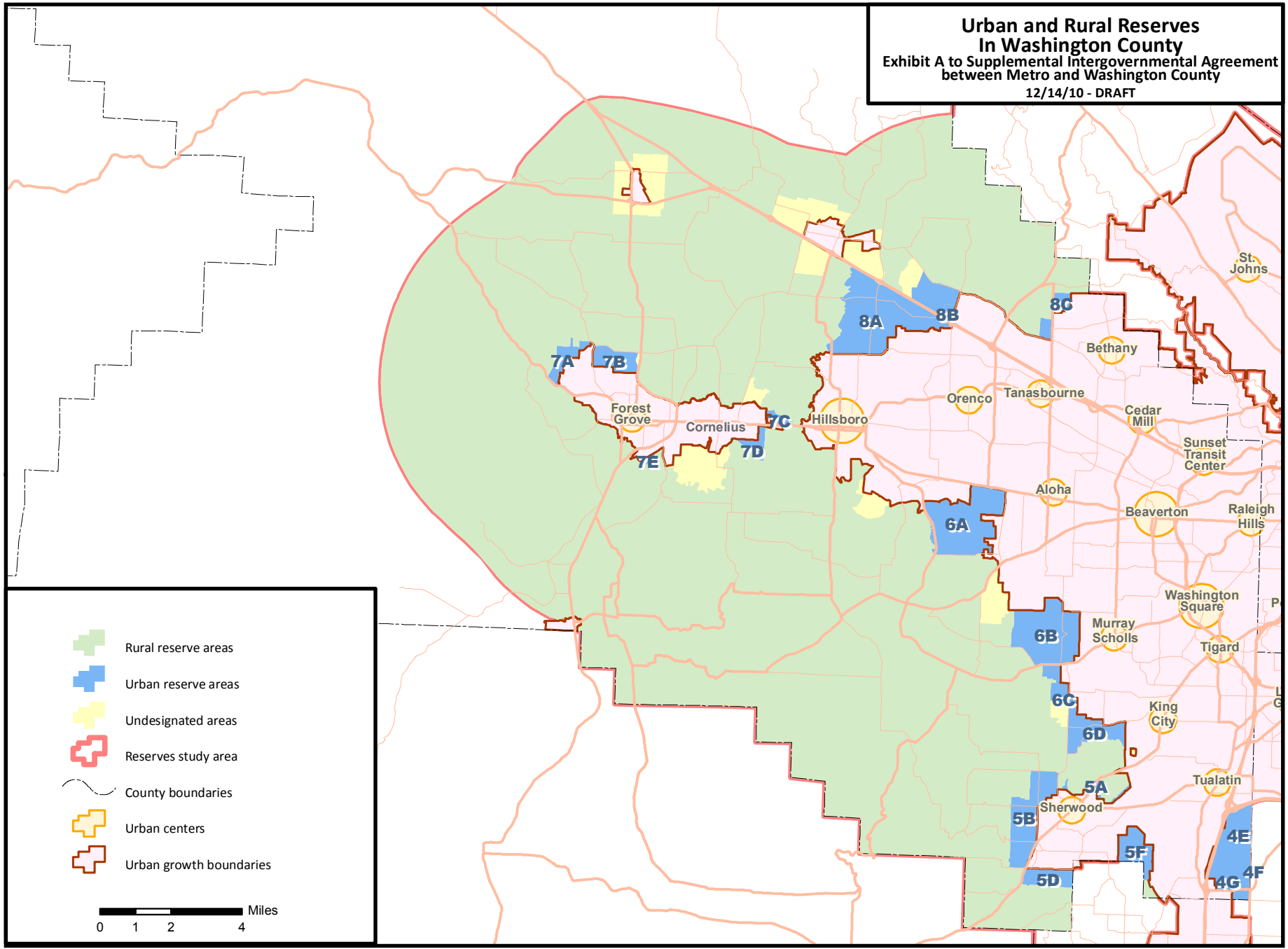









**Urban and Rural Reserves
In Washington County**
Exhibit A to Supplemental Intergovernmental Agreement
between Metro and Washington County
12/14/10 - DRAFT



-  Rural reserve areas
-  Urban reserve areas
-  Undesignated areas
-  Reserves study area
-  County boundaries
-  Urban centers
-  Urban growth boundaries

0 1 2 4 Miles