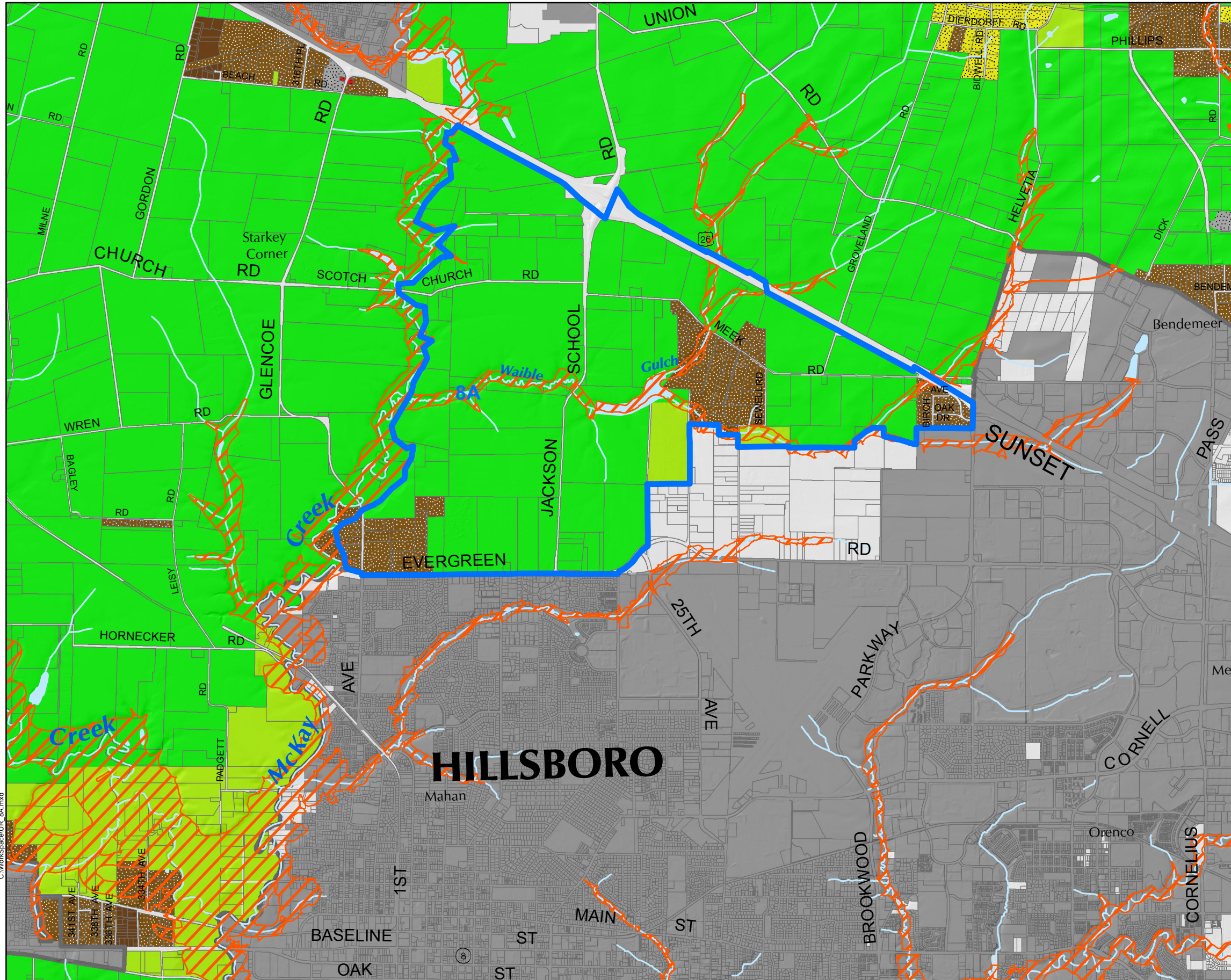


# Urban Reserve 8A

## Existing Rural Land Use Districts



Urban Reserve Area 8A - Hillsboro North

100-year Floodplain

### Land Use Districts

- Agriculture and Forest - 5 acre minimum
- Rural Residential - 5 acre minimum
- Agriculture and Forest - 10 acre minimum
- Agriculture and Forest - 20 acre minimum
- Exclusive Farm Use
- Exclusive Forest and Conservation
- Rural Commercial
- Rural Industrial
- Land Extensive Industrial

Stream

Waterbody



1 in represents 3,000 ft  
 0 1,500 3,000 6,000 Feet

This product is for informational purposes and may not have been prepared for, or be suitable for legal, engineering, or surveying purposes. Users of this information should review or consult the primary data and information sources to ascertain the usability of the information. Care was taken in the mapping but there are no warranties for this product. However, notification of any errors will be appreciated.



**WASHINGTON COUNTY**  
**OREGON**

Department of Land Use & Transportation  
 Long Range Planning

C:\Workspace\UR\_8A.mxd