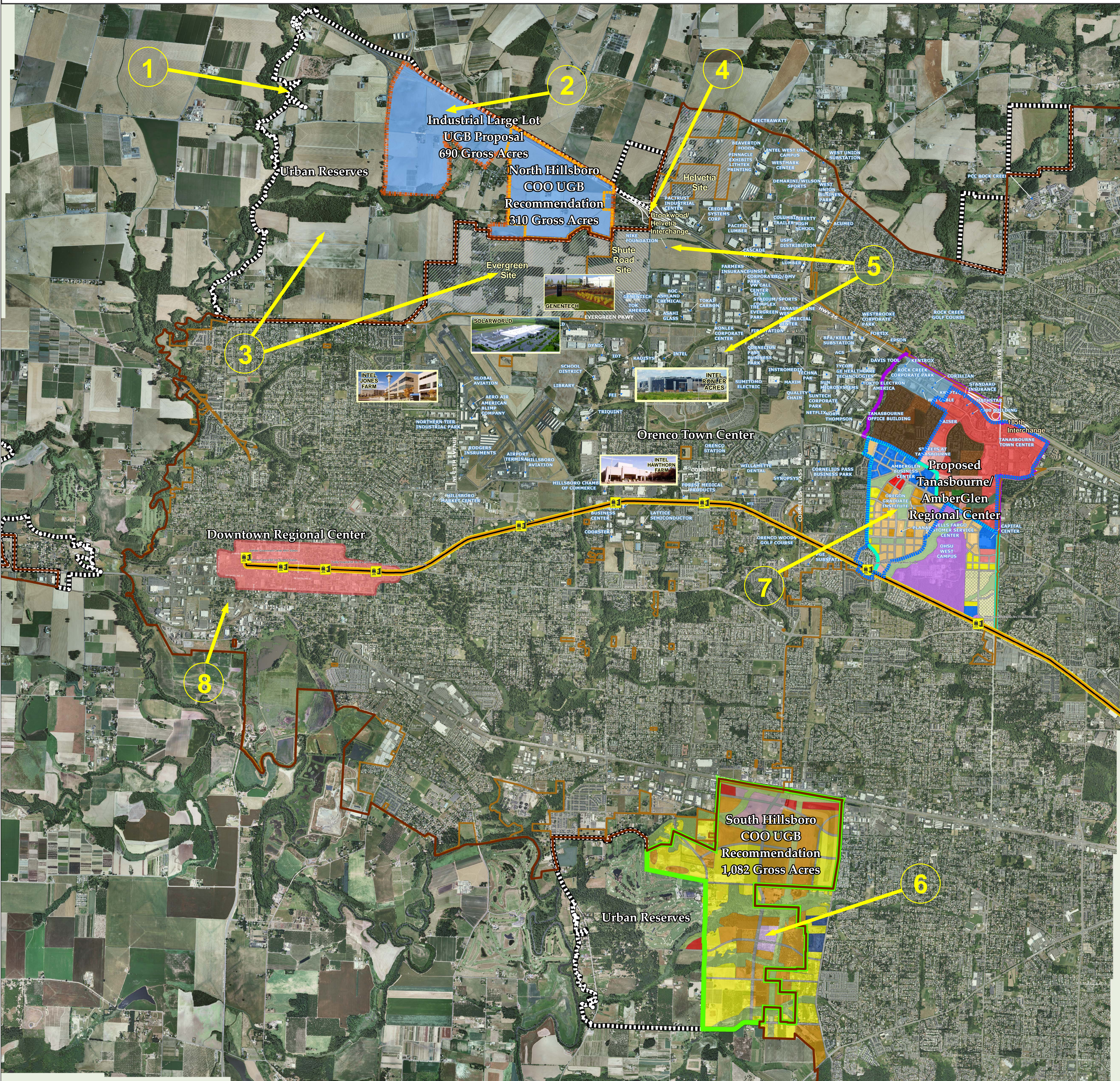


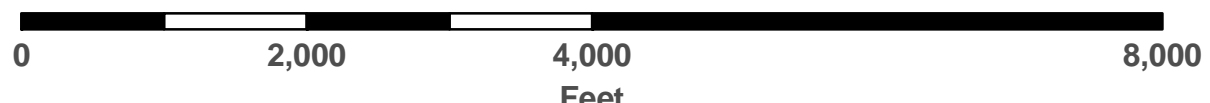
Community/Economic Development & Growth



PLANNING DEPARTMENT

150 E. Main Street, Fourth Floor
Hillsboro, OR 97123-4028
www.ci.hillsboro.or.us
Tel: 503.681.6153
Fax: 503.681.6245

1 inch = 0.25 miles



- Industrial Large Lot UGB Proposal
- NoHi COO UGB Recommendation
- South Hillsboro COO UGB Recommendation
- Urban Reserves
- Downtown Regional Center
- AmberGlen Community Plan Area

- Tanasbourne Plan Area
- Proposed Tanasbourne/AmberGlen Regional Center
- Hillsboro City Limits
- Urban Growth Boundary
- Light Rail
- Light Rail Stops

Source:
City of Hillsboro GIS
- Current as of November 2010
- Aerial Photo as of June 2009
- Employer Data Current as of 2009
Washington County GIS
- Current as of November 2010
Metro RLIS
- Current as of November 2010

DISCLAIMER: This product is for informational purposes and may not have been prepared for, or be suitable for legal, engineering, or surveying purposes. Users of this information should review or consult the primary data and information sources to ascertain the usability of the information.

Printing Date: November 10, 2010
File: W:\GIS_Projects\LRNCE\Industrial Employers\Community and Economic Growth_Numbered_E.mxd



DRAFT