



1

Urban Reserves



2

**Industrial Large Lot
UGB Proposal
690 Gross Acres**

**North Hillsboro
COO UGB
Recommendation
310 Gross Acres**

NIKE
FOUNDAT

Shute
Road

NW MEEK RD

NW SUNSET HWY

NW JACKSON SCHOOL RD

UGB Proposal
690 Gross Acres

North Hillsboro
COO UGB
Recommendation
310 Gross Acres

Urban Reserves

Evergreen Site



GENENTECH



SOLARWORLD



INTEL JONES FARM

GLOBAL AVIATION
AERO AIR
AMERICAN BLIMP COMPANY

SCHOOL DISTRICT
LIBRARY

EVERGREEN

DYNIC

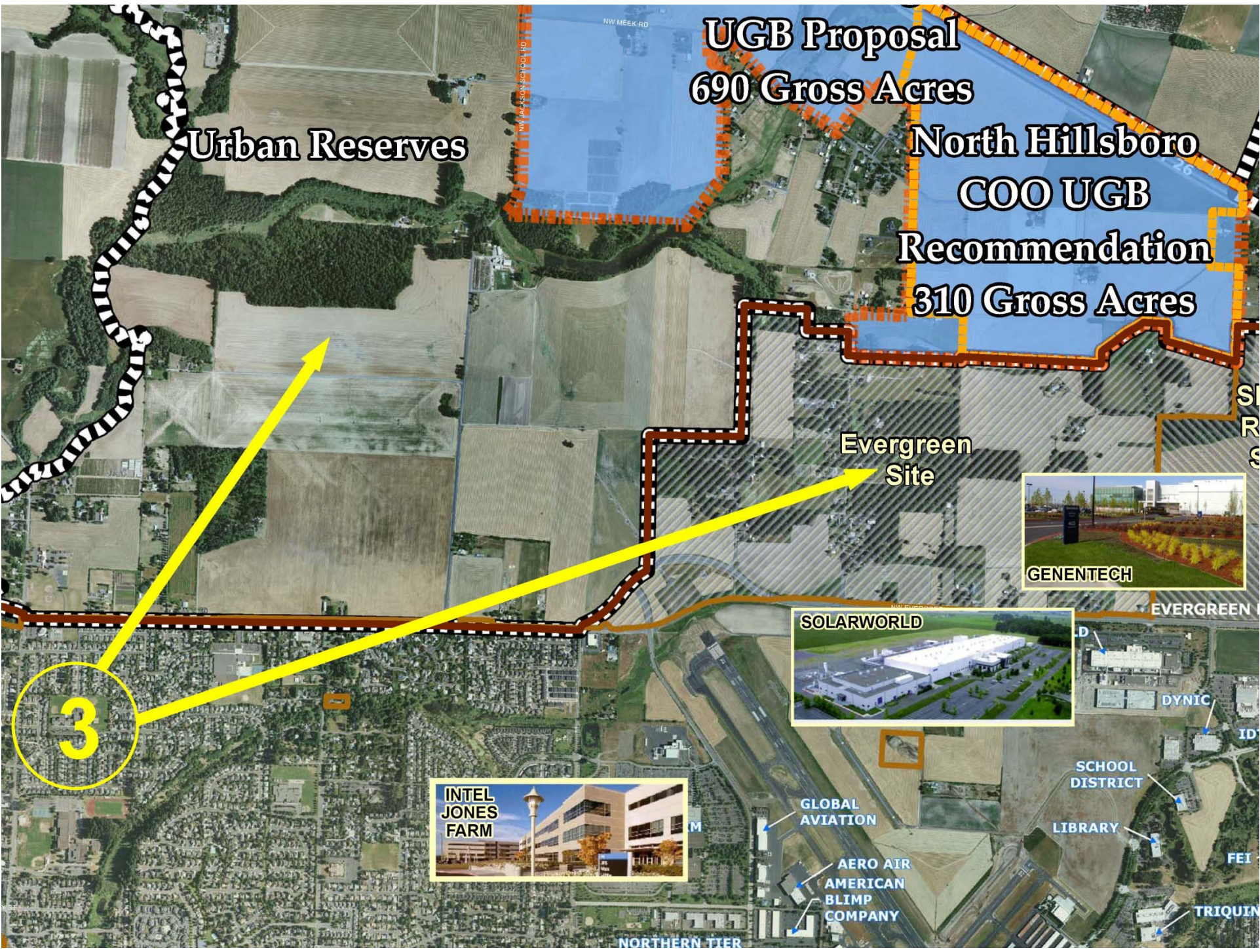
ID

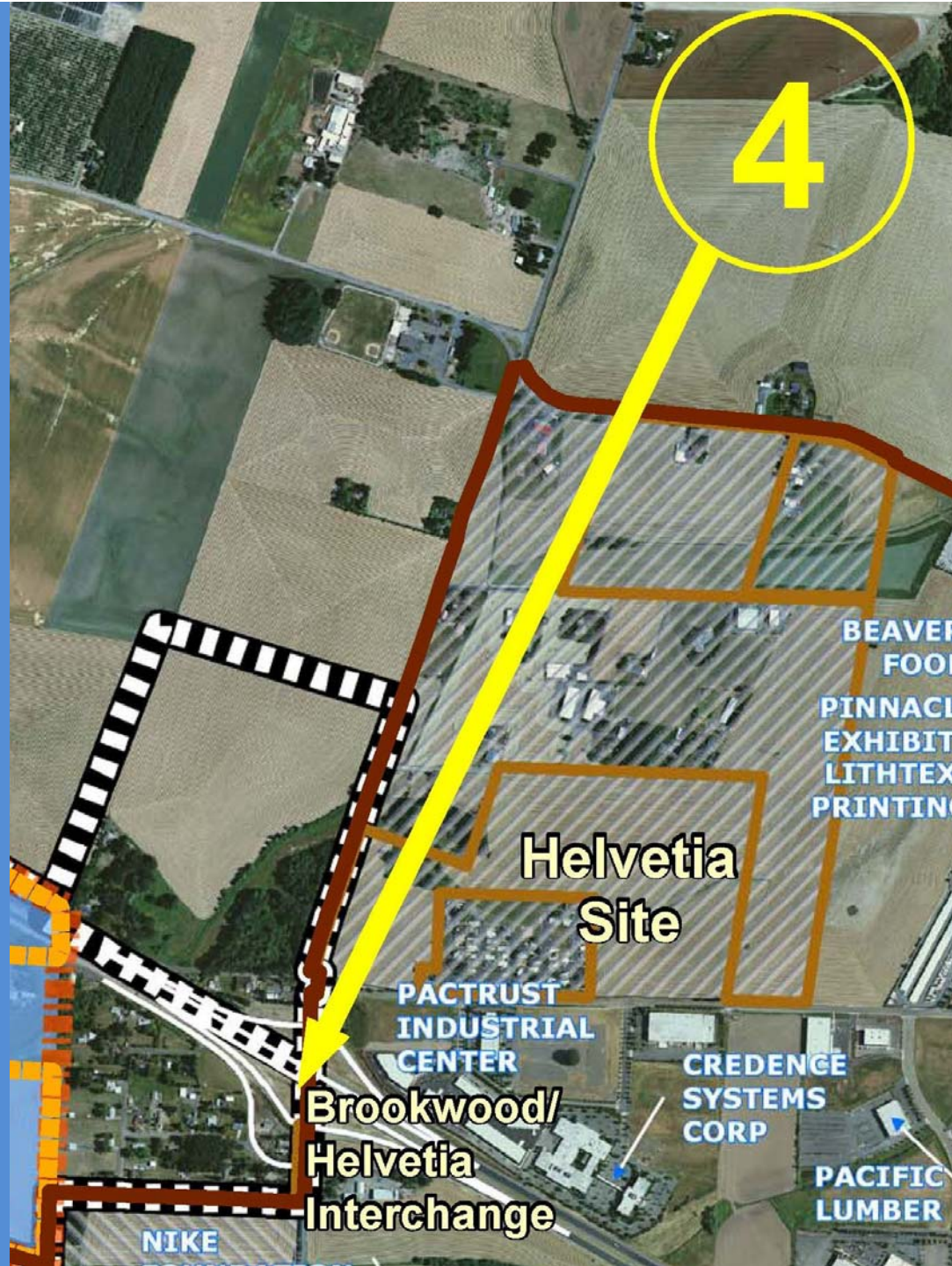
FEI

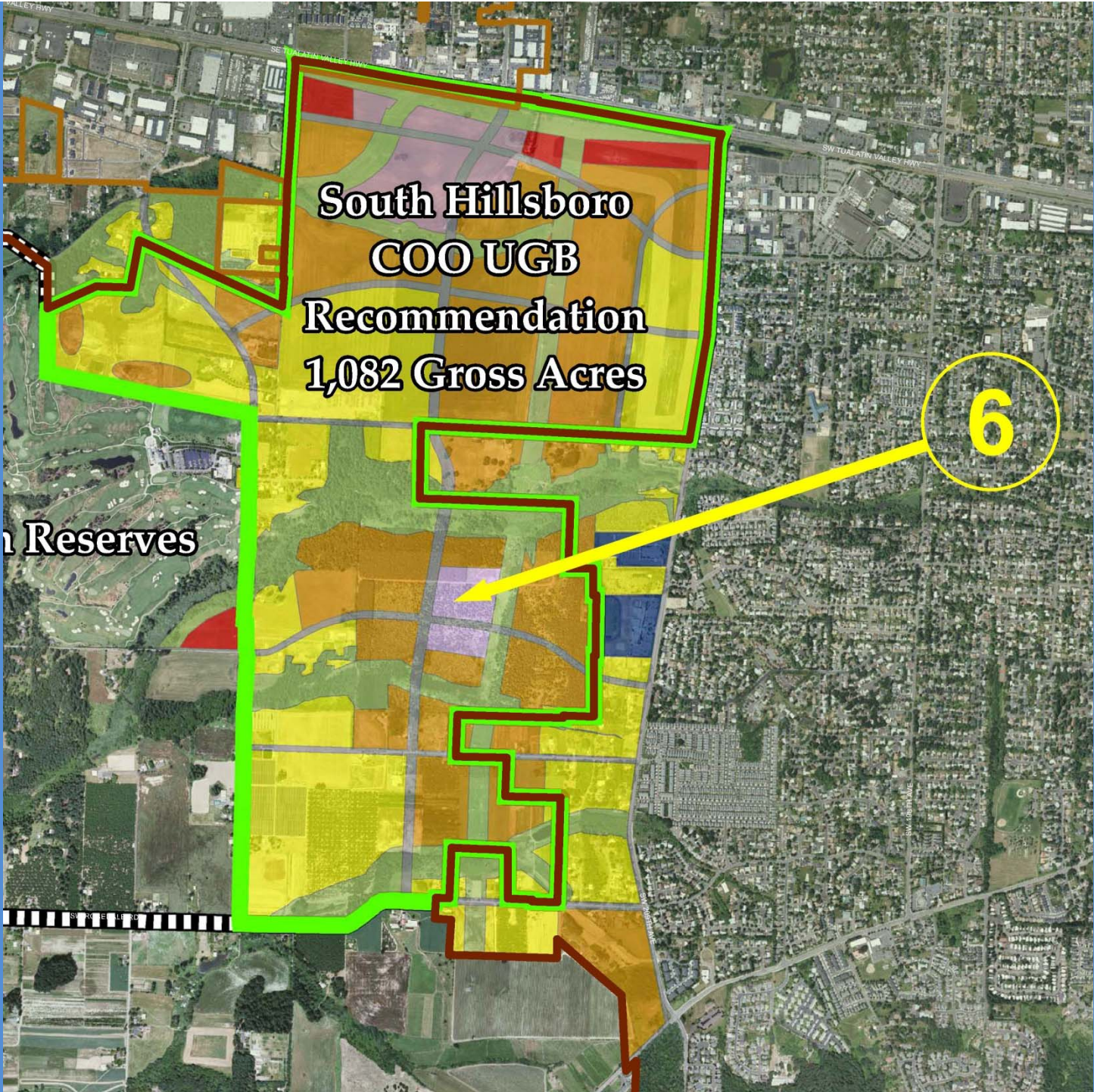
TRIQUIN

NORTHERN TIER

3



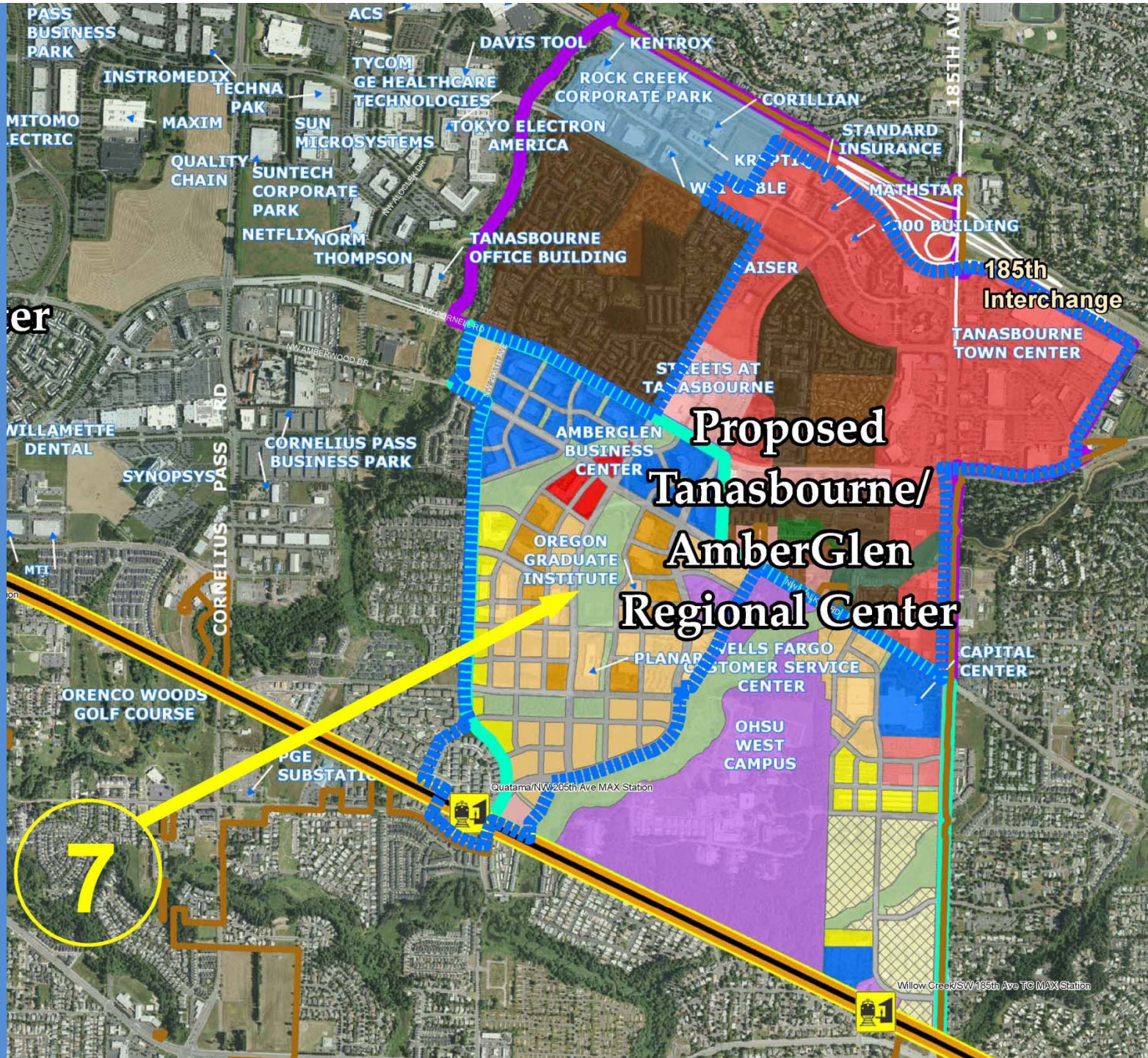


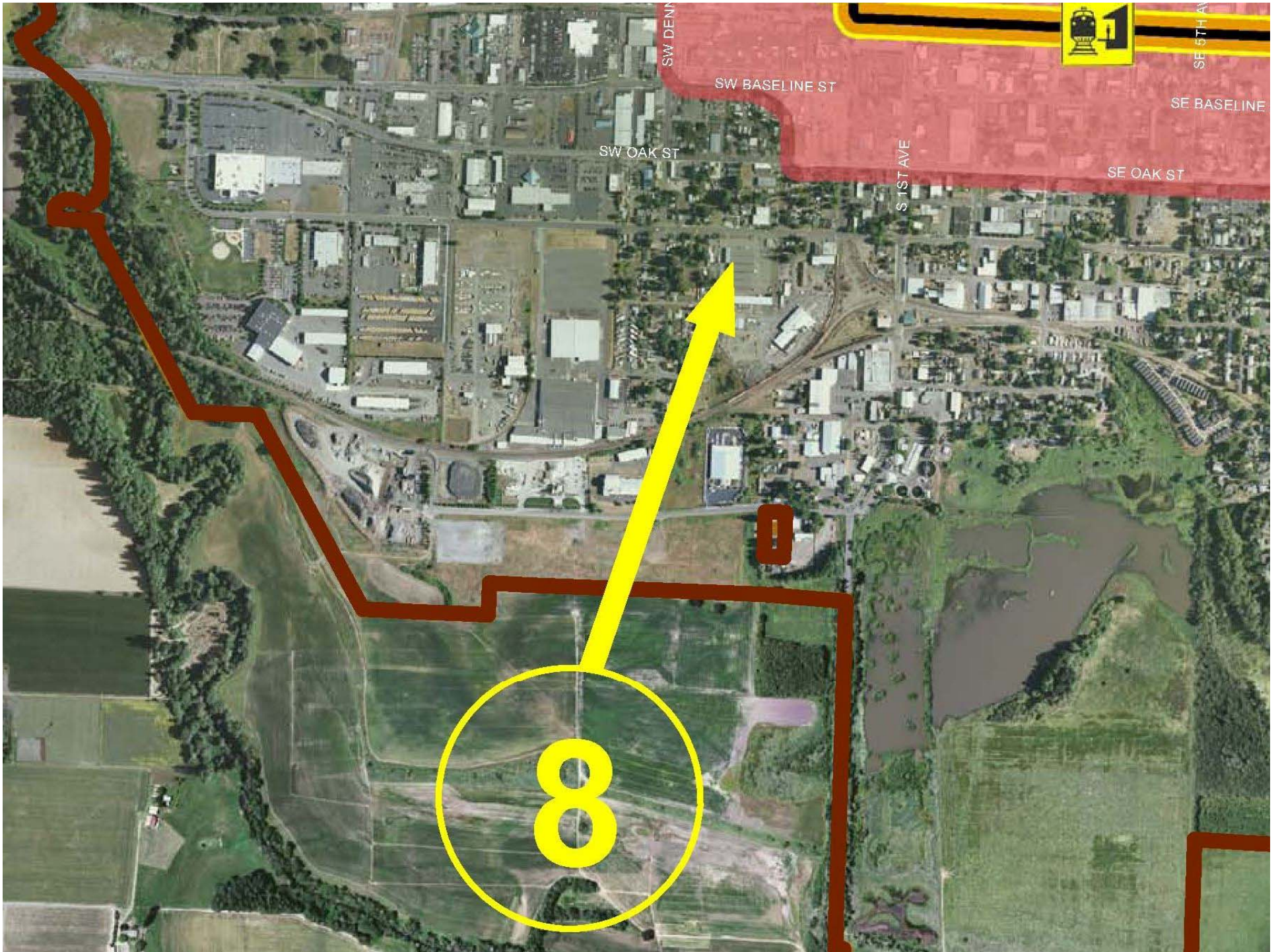


**South Hillsboro
COO UGB
Recommendation
1,082 Gross Acres**

Reserves

6





SW DENNIS

SW BASELINE ST

SW OAK ST

S 1ST AVE



SE 1ST AVE

SE BASELINE

SE OAK ST

8