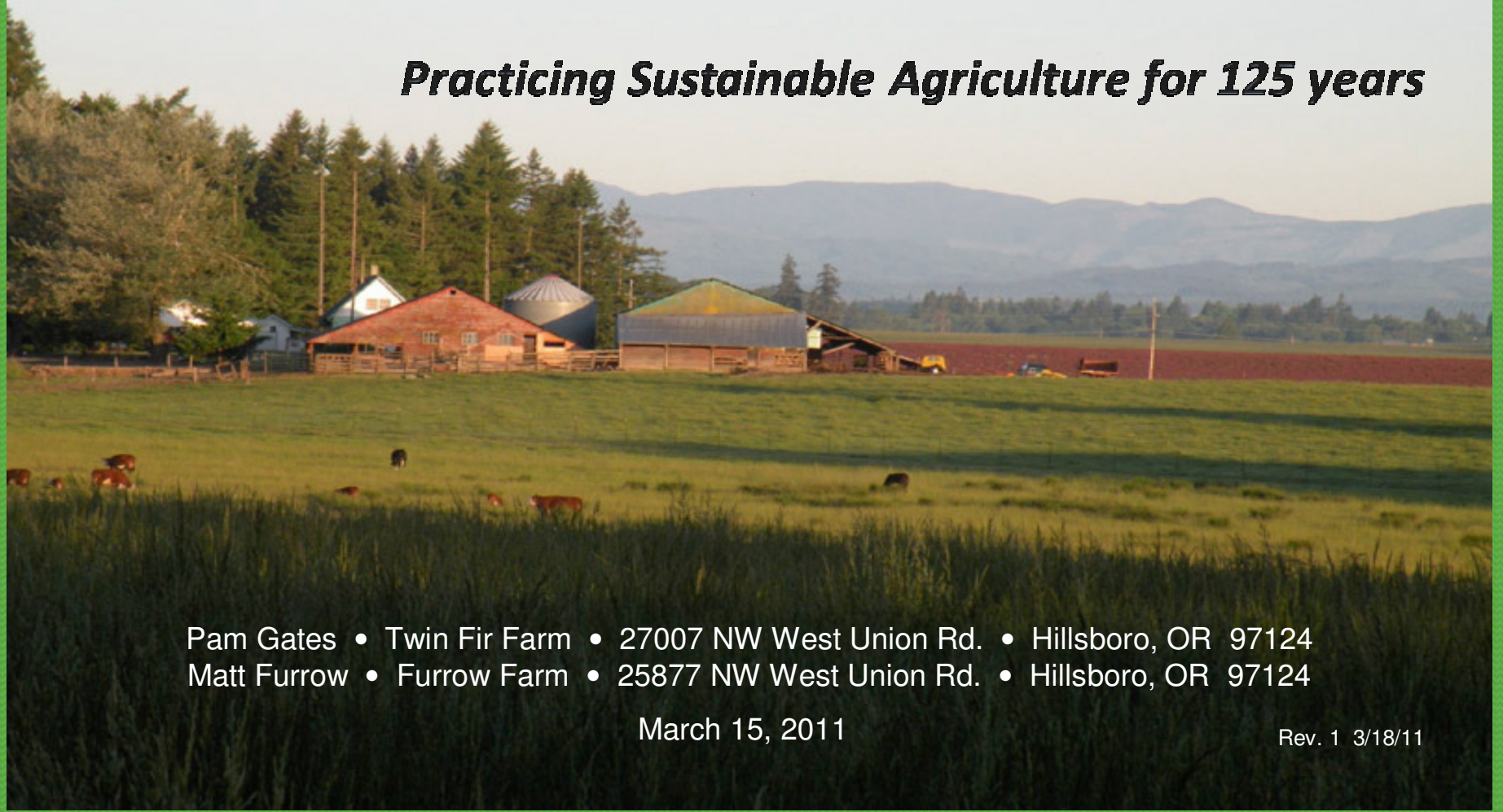


Helvetia's High Value Farms

Practicing Sustainable Agriculture for 125 years



Pam Gates • Twin Fir Farm • 27007 NW West Union Rd. • Hillsboro, OR 97124
Matt Furrow • Furrow Farm • 25877 NW West Union Rd. • Hillsboro, OR 97124

March 15, 2011

Rev. 1 3/18/11

Helvetia's High Value Farms



Red clover
(Helvetia Road)

- Traded Sector (export) crops create wealth for Washington County and Oregon – new \$\$
- Anchor Helvetia's landscape
- High-value grass seed crops
- Grass seed: 100% shipped out of OR, 20% exported globally
- Grass straw: 100% exported globally
- Wheat: 100% exported globally
- Clover seed: 96% shipped out of OR

Helvetia's Premium Seed Crops



Wheat fields
(West Union Road, Helvetia)

- Best quality turf seed in the world
 - Used on premier golf courses
- Best quality grass and clover in the world
 - Best yields per acre in Oregon
- Pacific Rim countries prefer Helvetia wheat
 - Optimum protein content

Helvetia's Hazelnuts



Hazelnut orchard
(Groveland Road, Helvetia)

- 98% of production shipped out of OR
- 65% of production exported globally
- Local production goes to make:
 - Hazelnut milkshakes at Burgerville
 - Hazelnut bread at Franz
 - Retail store in Cornelius

Helvetia's Christmas Tree Farms



(West Union Road, Helvetia)

- Retail U-cut supplies over 5,000 homes annually
- Wholesale trees sold to local nurseries
- 20% of trees are shipped out of Oregon, bringing new \$\$ into Washington County
- Specific varieties grown for Helvetia's lower elevations and high soil moisture content

Helvetia's Nurseries & Greenhouses



Nursery stock – trees
West Union Road (Helvetia)

- 50% of nursery stock exported outside Oregon
- 12% exported globally
- Greenhouses produce cuttings of ornamental plants for local nurseries
- One of the largest producers of Daphne in the U.S.

Helvetia's Dairy, Camelid, and Beef Ranches



- *Fourth generation Swiss farmers continue dairy tradition*
- The milk produced by Helvetia's Holsteins is shipped to Darigold in Portland for local consumption
- Helvetia's camelid ranches (alpaca and llama)
 - Produce breeding stock
 - Sell wool to local processors
 - Host largest auction in U.S.
- Helvetia's beef are used for breeding stock and local food.

Helvetia's Soils



Willamette Silt Loam soil
(Helvetia Road)

- Superb Class I, II, and III soils
- 50% of remaining Class I soils in WaCo are located in Area D and surrounding areas
- Careful stewardship of soils for 150 years
- Crop rotation – long term investment
 - Builds up nutrients
 - Combats disease
 - Controls weeds(Enhances purity of crops and sales \$\$)

Field Drainage (Field Tiling)

Optimizes Crop Production



- Farmers installed sub-surface drainage system
- 125 years of continuous capital investment
- Extensive, interdependent, and crosses farms and parcels
- Reduces “wet feet” for crops
- Sustainable, creative management of the soil.
- Severe flooding causes flooding on adjacent land



Preserve

Helvetia's High Value Farms



Designate Rural Reserves North of Highway 26